

CALMA

handcrafted and natural

Description of the collection



JAB

ANSTOETZ
FLOORING

Collection CALMA = Italian term for ‚calm‘

This collection meets exactly the spirit of the times!

Natural living - Living in harmony with nature.

Carpets made of 100% natural materials
with discreet structures in restrained, natural hues.

The colour nuances are created through a targeted mix of natural sheep's colours.

- free from synthetic dyes
- free from chemical moth protection
- free from harmful substances
- anti-allergenic

Grammages of up to 5,000 g/m²
create a unique atmosphere of well-being.

Collection CALMA

Hand-woven carpets from natural materials

Number of articles	4
total of SKUs	12

GLADE & GROVE

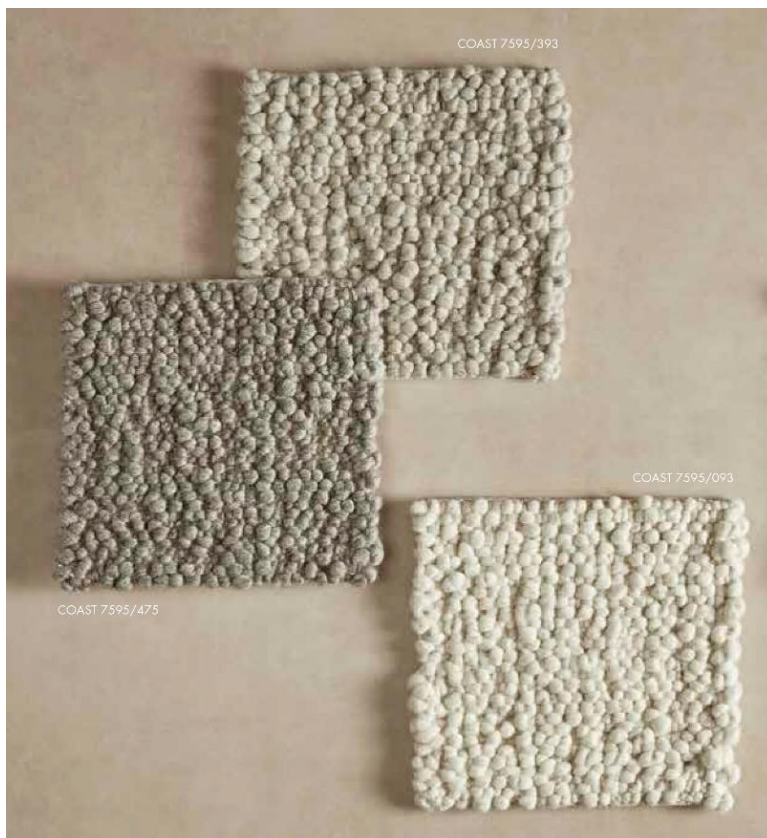


COAST & CREEK

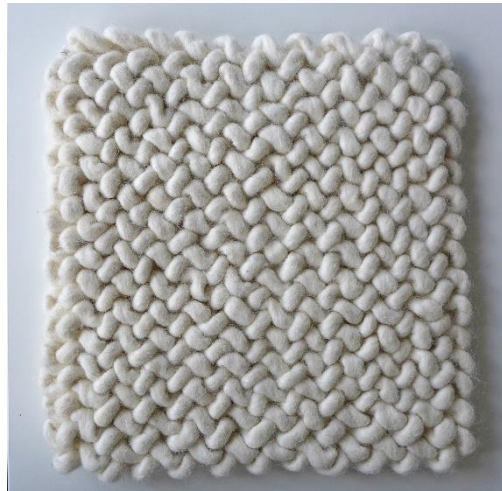


Article overview

Name	Article number	SKUs	Material wear layer	Material total	Weight approx.
GLADE	7593/XXX	3	100% WO	73% WO, 27 % CO	5,000 g/m ²
GROVE	7594/XXX	3	100% WO	80% WO, 20% CO	4,500 g/m ²
COAST	7595/XXX	3	85% WO, 15% JU	60% WO, 30% CO, 10 % JU	4,000 g/m ²
CREEK	7596/XXX	3	100% WO	90% WO, 10% CO	3,700 g/m ²



GLADE



Article No./Colours

7593/197

7593/273

7593/593

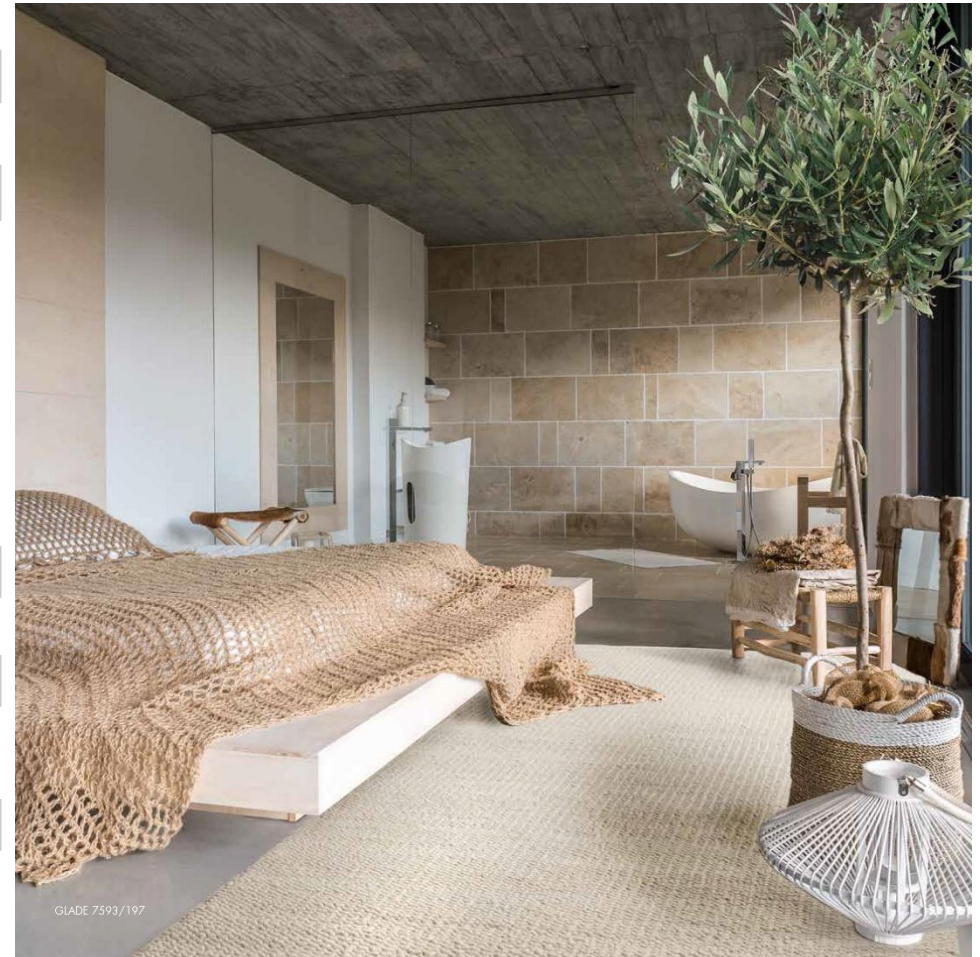


Article number	7593/XXX
SKUs	3
Wear layer	100% WO
Total composition	73% WO, 27 % CO
Production process	handwoven
Weight approx.	5,000 g/m ²

Key Words

GLADE

The vividly structured surface is created by loops woven diagonally in opposite directions, creating a particularly appealing interplay of light and shadow, just like in a glade.



GROVE



Article No./Colours

7594/295

7594/492

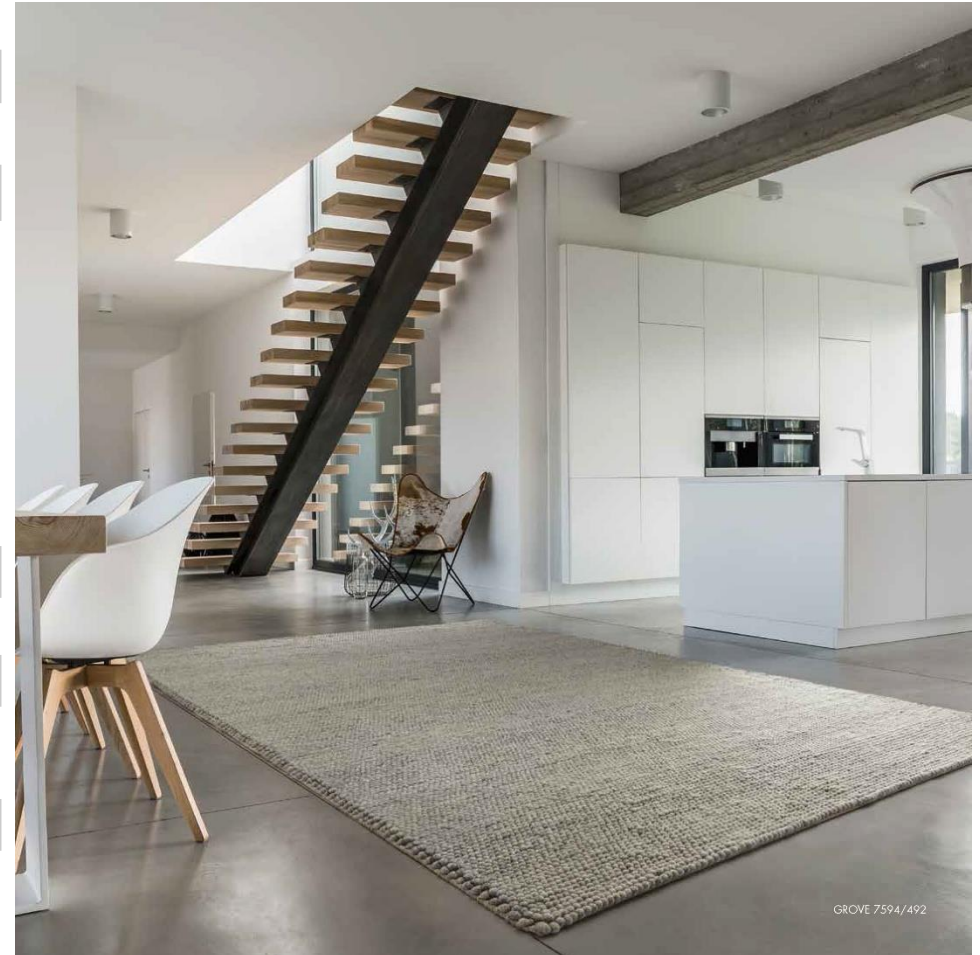
7594/691



Article number	7594/XXX
SKUs	3
Wear layer	100% WO
Total composition	80% WO, 20 % CO
Production process	handwoven
Weight approx.	4,500 g/m ²

Key Words

GROVE
With the lively pearl pattern, felted wool beads stand close together in a natural order.



GROVE 7594/492

COAST



Article No./Colours

7595/093

7595/393

7595/475



Article number	7595/XXX
SKUs	3
Wear layer	85% WO, 15% JU
Total composition	60% WO, 30 % CO, 10% JU
Production process	handwoven
Weight approx.	4,000 g/m ²

Key Words

COAST

With its natural-casual look and its vivid impression reminiscent of pebbles on a beach, this article conjures up naturalness in every living space.



COAST 7595/393

CREEK



Article No./Colours

7596/190

7596/374

7596/697

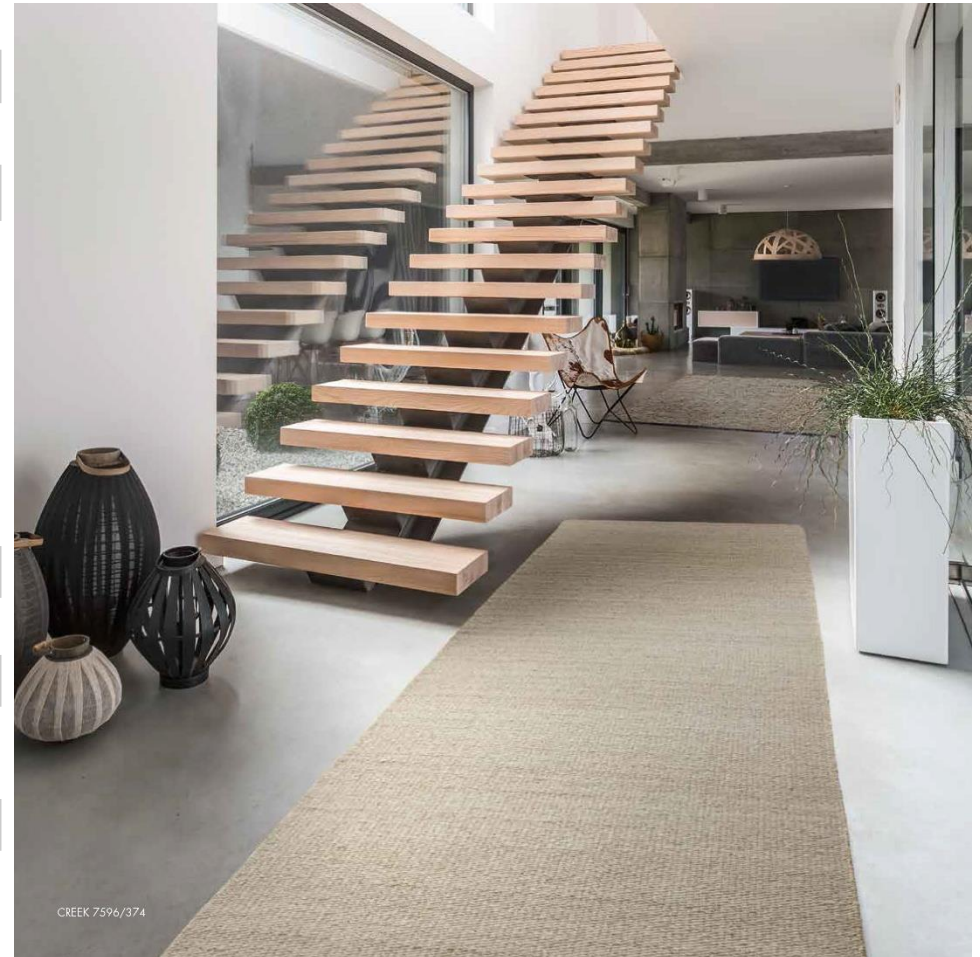


Article number	7596/XXX
SKUs	3
Wear layer	100% WO
Total composition	90% WO, 10 % CO
Production process	handwoven
Weight approx.	3,700 g/m ²

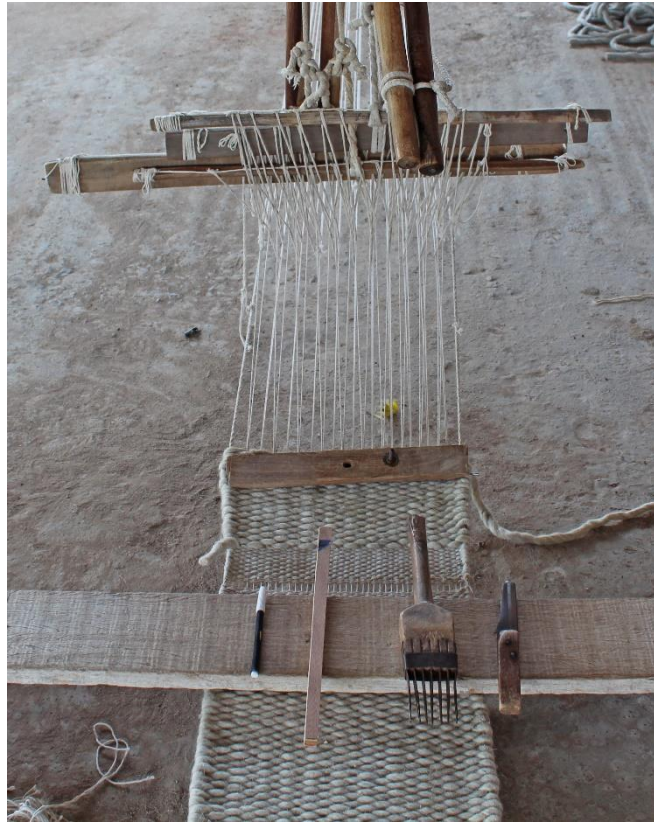
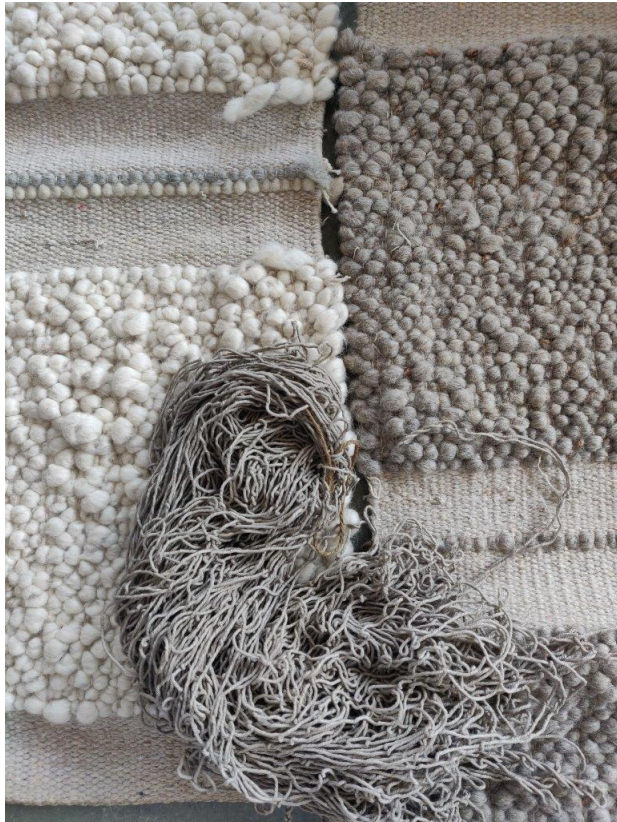
Key Words

CREEK

This puristic article has a particularly soft look and feel. Its calm surface suits any furnishing scheme.



Production



Key Words

Handwoven collection

- Colours are mixed/sorted from natural wool colours - no dyeing process required.
- Wool yarns are mechanically felted to create a durable yarn
- and then woven on a stable cotton warp.
- This is done on traditional mechanical handlooms
- by skilled artisans.
- STEP

www.label-step.org



Additional information

Collection		Article number
CALMA	2 sample rings + 50 brochures	M-1271/097

- Slight deviations in colour and structure are typical characteristics of the product, as these qualities are handmade of natural wool colours.
- Due to the handcrafted production dimensional tolerances up to 5% are possible.
- Round shapes are unfortunately not feasible for production reasons.
- As a standard, the carpets are offered up to the following sizes – larger sizes only on request
- GLADE - 500 cm x 700 cm
- GROVE - 360 cm x 500 cm → looms are built vertically instead of horizontally, therefore narrower widths are standard
- COAST - 500 cm x 700 cm
- CREEK - 500 cm x 700 cm